

Capillary Electrophoresis (CE) System



Next | 875 CE System

- ◆ Fully automated and flexible system
- ◆ Integrated DAD detector 190-1010nm
- ◆ Accurate and reproducible injection with patented DCI Technology
- ◆ High sample handling capacity, 50/96 samples and 50 buffer positions at inlet and 20 buffer positions at outlet
- ◆ Pressure injection from 96-well plate
- ◆ Ultra short capillary length to external detectors
- ◆ Ability to perform fraction collection under precise controlled circumstances
- ◆ Pre-installed with PrinCE Next Clarity software

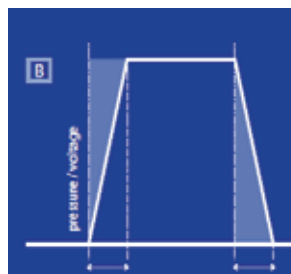


C770 CE System

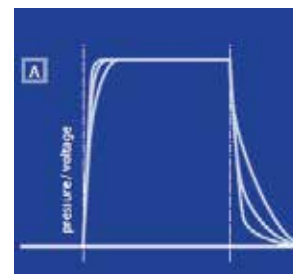
- ◆ Fully automated and flexible system suitable for all applications
- ◆ Integrated DAD detector 190-1010nm
- ◆ Accurate and reproducible injection with patented DCI Technology
- ◆ 30/48 position carousel for sample and buffer vials
- ◆ Large buffer vials to eliminates the need of buffer replenishment system
- ◆ Pre-installed with WinPrinCE DAX 3D software



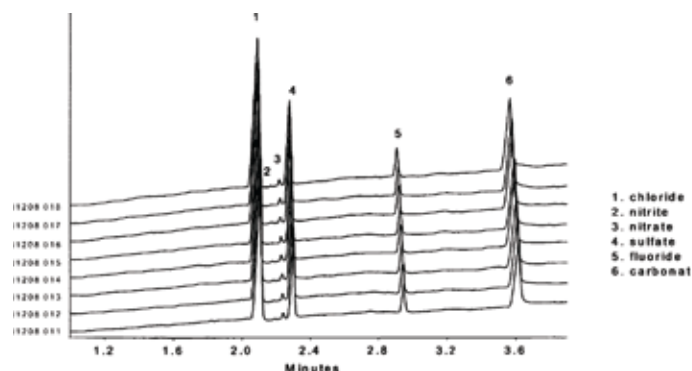
Dynamic Compression Injection (DCI) Repeatability of injection : <1% R.S.D. (n>10)



PrinCE CE systems
Accurate & reproducible
Voltage/Pressure curve
to achieve precise
injection volume every
time.



Other CE systems
Variable & unpredictable
Voltage/Pressure curve
resulting in variable
injection volume each
time.



Reproducibility of Anions in Tap Water

Modes of CE Separation

PrinCE CE systems can perform the following modes:-

- ◆ Capillary Zone Electrophoresis (CZE)
- ◆ Micellar Electrokinetic Chromatography (MEKC)
- ◆ Capillary Isoelectric Focusing (CIEF)
- ◆ Capillary Gel Electrophoresis (CGE)
- ◆ Capillary Isotaphoresis (CITP)
- ◆ Capillary Electrochromatography (CEC)

External CE Detectors

PrinCE CE systems can couple to external CE detectors without any special tools:-

- ◆ UV/Vis detector
- ◆ Conductivity detector
- ◆ Electrochemical detector
- ◆ LIF detector
- ◆ Mass spectrometer